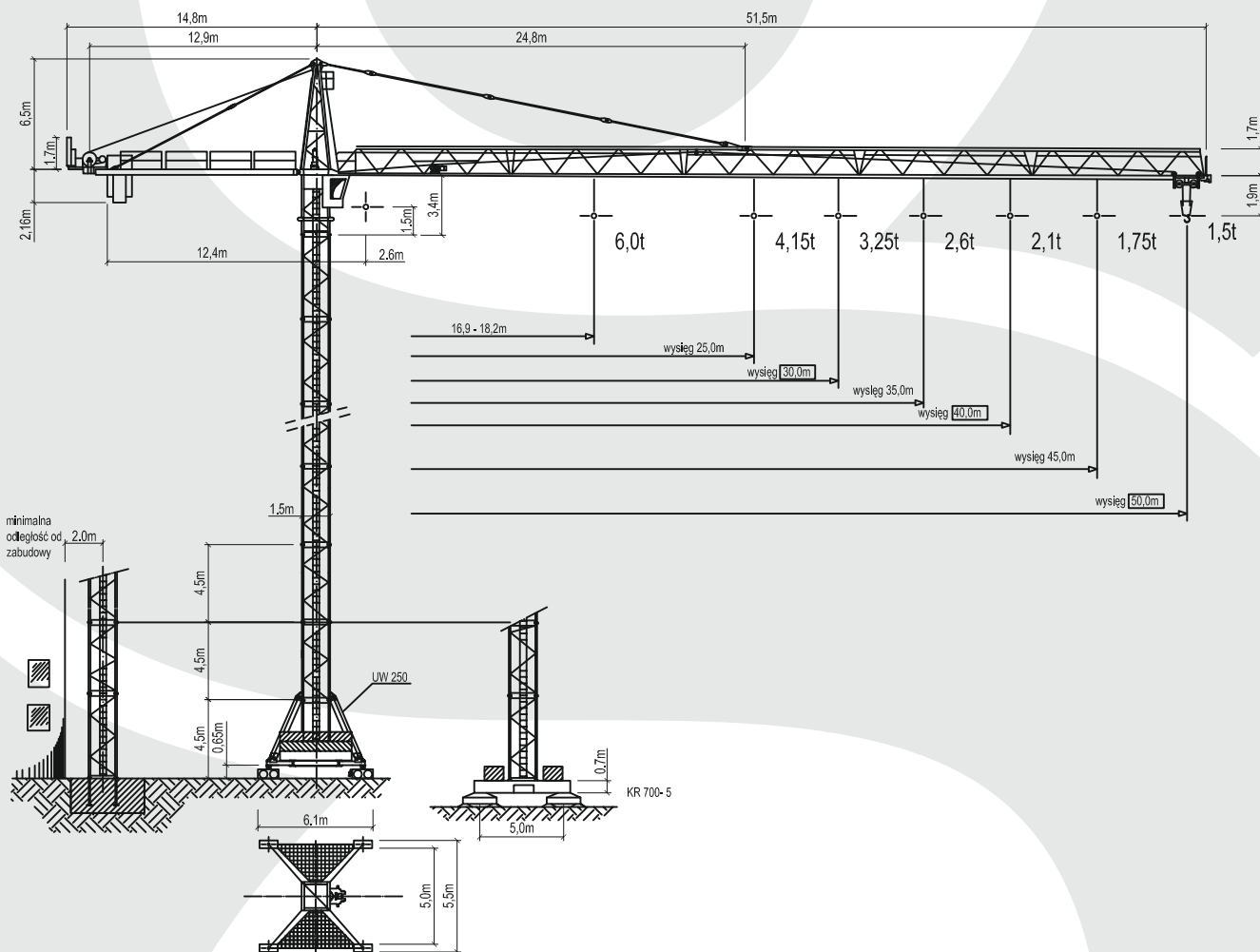


WOLFF WK 92 SL

MAXIMUM CAPACITY: 6 TONS



TECHNICAL DATA:

MAXIMUM LOAD: 6 TONS
JIB LENGTH: 50 M

MAX LOAD AT THE END OF THE JIB: 1,5 TONS

WOLFF WK 92 SL

MAXIMUM CAPACITY: 6 TONS



Load diagram

DIN 15018 H1/B3

| | | Reach (m) | | | | | | | | Capacity (m) |
|----------------|----|------------|------|------|------|------|------|------|------|--------------|
| | | | 20 | 25 | 30 | 35 | 40 | 45 | 50 | |
| Jib length (m) | 25 | 2,6 - 18,2 | 5,39 | 4,15 | | | | | | |
| | 30 | 2,6 - 17,9 | 5,28 | 4,06 | 3,25 | | | | | |
| | 35 | 2,6 - 17,5 | 5,15 | 3,96 | 3,17 | 2,60 | | | | |
| | 40 | 2,6 - 17,1 | 5,00 | 3,84 | 3,07 | 2,51 | 2,10 | | | |
| | 45 | 2,6 - 16,9 | 4,94 | 3,79 | 3,03 | 2,48 | 2,07 | 1,75 | | |
| | 50 | 2,5 - 16,9 | 4,94 | 3,79 | 3,03 | 2,48 | 2,07 | 1,75 | 1,50 | |

Seryjny wysięgnik = 30/40/50 m

Mechanisms

(380 V, 50 Hz)

| Gear (Typ) | Operating speed (m/min) | rope system | max. hook height (m) | Power (kW) | Total power (kW) |
|------------|--|-------------|----------------------|------------|------------------|
| Hw 6373 | Lifting 1,5 t..... 80 3,0 t..... 50 6,0 t..... 28 | 2 | 145 | 37 | 46,6 |
| Tw 50 FG | Trolley 3,0 t.....80/40/20 6,0 t.....40/20 | | | 3,9 | |
| Dw - FG | Slew 0,8 min ⁻¹ | | | 5,7 | |

WOLFF WK 92 SL

MAXIMUM CAPACITY: 6 TONS



Tower configuration

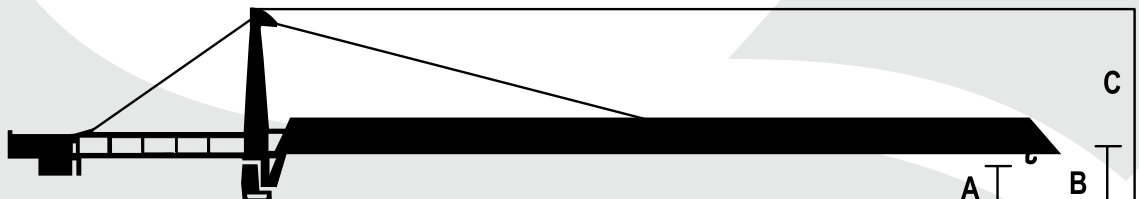
For free-standing crane on foundation

Slewing part

Hook height A=1,5 m

Jib height B=3,4 m

Total height C=9,9 m



| | | | | | | |
|-------------------------|------------------------|--|-------|--------|--------|--------|
| 1 | 6,0 | | UV 15 | UV 15 | UV 15 | UV 15 |
| 2 | 10,5 | | UV 15 | UV 15 | UV 15 | UV 15 |
| 3 | 15,0 | | UV 15 | UV 15 | UV 15 | UV 15 |
| 4 | 19,5 | | UV 15 | UV 15 | UV 15 | UV 15 |
| 5 | 24,0 | | UV 15 | UV 15 | UV 15 | UV 15 |
| 6 | 28,5 | | UV 15 | UV 15 | UV 15 | UV 15 |
| 7 | 33,0 | | UV 15 | UV 15 | UV 15 | UV 15 |
| 8 | 37,5 | | UV 15 | UV 15 | UV 15 | UV 15 |
| 9 | 42,0 | | UV 15 | UV 15 | UV 15 | UV 15 |
| 10 | 46,5 | | UV 15 | UVÜ 15 | UVÜ 15 | UVÜ 15 |
| 11 | 51,0 | | | UV 20 | UV 20 | UV 20 |
| 12 | 55,5 | | | UV 20 | TVA 20 | TVA 20 |
| 13 | 60,0 | | | UV 20 | TV 20 | TV 20 |
| 14 | 64,5 | | | | TV 20 | TV 20 |
| 15 | 69,0 | | | | TV 20 | TV 20 |
| 16 | 73,5 | | | | TV 20 | TV 20 |
| 17 | 78,0 | | | | TV 20 | TVÜ 20 |
| 18 | 82,5 | | | | | TV 25 |
| Section of tower | Hook height (m) | | | | | |

WOLFF WK 92 SL

MAXIMUM CAPACITY: 6 TONS



Tower configuration

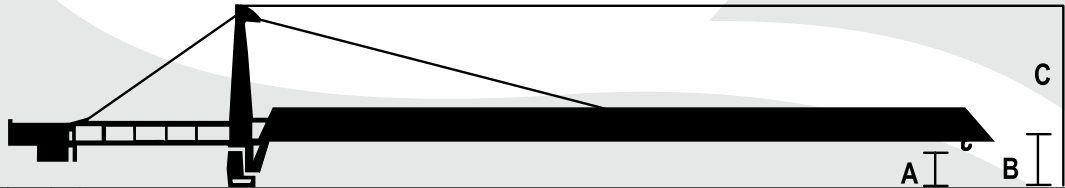
For free-standing crane on cross beam

Slewing part

Hook height A=1,5 m

Jib height B=3,8 m

Total height C=9,9 m



| | | | | | | | |
|-------------------------|------------------------|--|-------|--------|--------|--------|--------|
| 1 | 6,0 | | UV 15 | UV 15 | UV 15 | UV 15 | UV 15 |
| 2 | 10,5 | | UV 15 | UV15 | UV 15 | UV 15 | UV 15 |
| 3 | 15,0 | | UV 15 | UV 15 | UV 15 | UV 15 | UV 15 |
| 4 | 19,5 | | UV 15 | UV 15 | UV 15 | UV 15 | UV 15 |
| 5 | 24,0 | | UV 15 | UV 15 | UV 15 | UV 15 | UV 15 |
| 6 | 28,5 | | UV 15 | UV 15 | UV 15 | UV 15 | UV 15 |
| 7 | 33,0 | | UV 15 | UV 15 | UV 15 | UV 15 | UV 15 |
| 8 | 37,5 | | | UV 15 | UV 15 | UV 15 | UV 15 |
| 9 | 42,0 | | | UV 15 | UV 15 | UV 15 | UV 15 |
| 10 | 46,5 | | | UVÜ 15 | UVÜ 15 | UVÜ 15 | UVÜ 15 |
| 11 | 51,0 | | | | TVA 20 | UV 20 | UV 20 |
| 12 | 55,5 | | | | | UV 20 | TVA 20 |
| 13 | 60,0 | | | | | TVA 20 | TV 20 |
| 14 | 64,5 | | | | | TV 20 | TV 20 |
| 15 | 69,0 | | | | | | TVÜ 20 |
| 16 | 73,5 | | | | | | UVA 25 |
| 17 | 78,0 | | | | | | |
| 18 | 82,5 | | | | | | |
| Section of tower | Hooh height (m) | | | | | | |