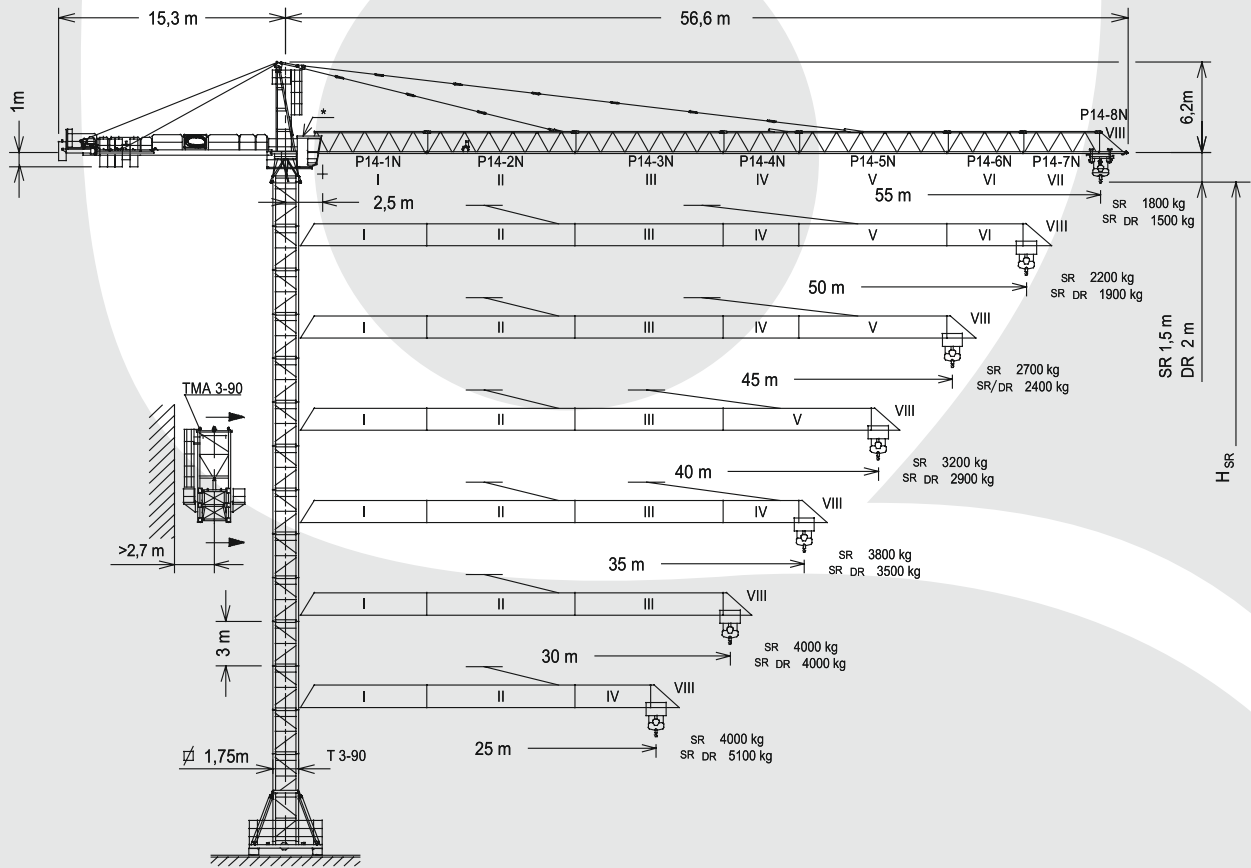
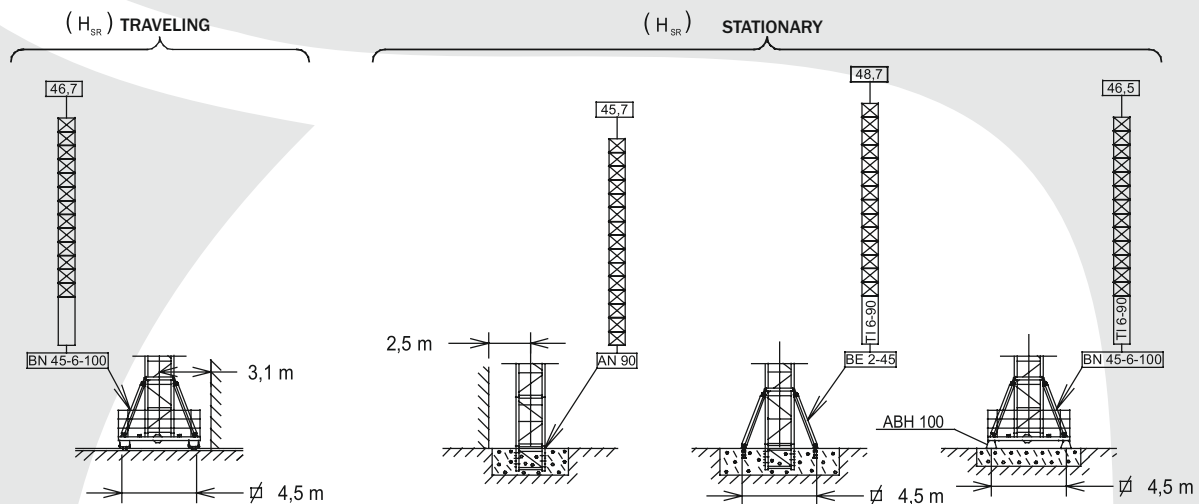


# JASO J110N

MAXIMUM CAPACITY: 8 TONS



Maximum hook height without



## TECHNICAL DATA:

MAXIMUM LOAD: 8 TONS

MAXIMUM JIB LENGTH: 55 m

# JASO J110N

MAXIMUM CAPACITY: 8 TONS



## Load diagram JASO J110N

JIB	SR - 4000							4000 kg
	Hook reach (m)							
	55	50	45	40	35	30	25	
55 m	1800	2025	2300	2640	3080	3665	4000	27,7 m
50 m		2200	2495	2860	3330	3960	4000	29,7 m
45 m			2700	3090	3595	3960	4000	31,8 m
40 m				3200	3720	4000	4000	32,8 m
35 m					3800	4000	4000	33,4 m
30 m						4000	4000	30 m
25 m							4000	25 m

## Load diagram JASO J110N

JIB	SR / DR — 4000 / 8000									4000 / 8000 kg
	Hook reach (m)									
	55	50	45	40	35	30	25	20	15	
55 m	1500	1715	1980	2305	2730	3290	4000 / 4080	4000 / 5260	4000 / 7230	25,4 / 13,7 m
50 m		1900	2185	2540	2990	3600	4000 / 4450	4000 / 5725	4000 / 7850	27,4 / 14,7 m
45 m			2400	2780	3270	3925	4000 / 4840	4000 / 6210	4000 / 8000	29,5 / 15,8 m
40 m				2900	3405	4000 / 4085	4000 / 5030	4000 / 6450	4000 / 8000	30,5 / 16,4 m
35 m					3500	4000 / 4190	4000 / 5160	4000 / 6615	4000 / 8000	31,2 / 16,8 m
30 m						4000	4000 / 4930	4000 / 6325	4000 / 8000	30 / 16,1 m
25 m							4000 / 5100	4000 / 6540	4000 / 8000	25 / 16,6 m

## Balast dolny

For intermediate heights use ballast for higher height

Hook height (m)	19,7	31,7	40,7	46,7
Number of blocks ballast for assembling	6	8	10	12

## Counterweight

JIB	2360 kg		1500 kg		Counterweight before jib assembly		
	55	50	45	40	35	30	25
SR							
SR / DR							
TOTAL (kg)	13300	11800	11800	9440	9440	6220 / 7080	4720 / 6220

# JASO J110N

## MAXIMUM CAPACITY: 8 TONS



### Packing list

DENOMINATION		L (m)	A (m)	H (m)	Weight (kg)	
Tower section	TI 6-90		6,235	2,095	2,095	2500
	T 6-90		6,235	1,818	1,818	2280
	T 3-90		3,235	1,818	1,818	1212
Slewing table + Tower head + slewing			3,390	2,060	2,150	3400
Tower head structure + hosting			6,090	1,915	1,930	1520
Slewing table + Tower head + slewing + hosting			8,370	2,615	2,720	4920
Jib section	I		8,665	1,365	1,675	1040
	II		10,160	1,226	1,630	1270
	III		10,160	1,226	1,560	840
	IV		5,270	1,226	1,630	495
	V		10,160	1,226	1,630	695
	VI		5,260	1,226	1,550	325
	VII		5,270	1,226	1,545	295
	Tip jib		2,095	1,365	1,740	230
Hook assembly	SR		0,990	0,200	1,067	214
	DR		1,040	0,200	1,725	347
Crab	SR		2,005	1,665	1,525	225
	DR		2,070	1,775	1,550	335
Counterjib with platforms			11,950	1,490	0,709	2495
Engine	EC3360		2,560	2,315	1,750	2305
	EC4070VF		2,560	2,315	1,750	2430
	EC4880		2,560	2,315	1,750	2430
Platform and cabin			3,760	1,650	2,340	820
Counterweight	Big		1,080	0,500	2,025	2360
	Small		1,080	0,500	1,305	1500
Ballast			3,800	0,580	1,500	6000
Climbing cage			6,420	2,535	2,410	3080

### Mechanisms features

* Optional												
		EC3360			EC4070 VF			EC4880	TG1125VF	OG1108VF	TC465VF	TH1210
	t m/min	2	4	4	2	4	4	2	4	4		
		60	30	6	0...70	0...35		80	40	10		
	t m/min	4	8	8	4	8	8	4	8	8		
		30	15	3	0...35	0...17,5		40	20	5		1 m/min
kW		24,3			29,4			35,3	2 x 4	2 x 5,5	3	9,2
Maximum hook course		SR 102 m en 3 capas 272 m en 7 capas max			SR 168m en 3 capas 292 m en 5 capas max			DR 84m en 3 capas 146 m en 5 capas max		400V 50Hz	Required power	
		DR 51 m en 3 capas 136 m en 7 capas max									EC 3360=46,3 kW EC 4070VF=51,4 kW EC 4880=57,3 kW	

# JASO J110N

## MAXIMUM CAPACITY: 8 TONS



### Towers

TOWERS	HEIGHT (m)	Diagram of crane tower and jib				TOWERS	HEIGHT (m)
1	3,70	T 3-90 TD 3-90	T 3-90 TD 3-90	T 3-90 TD 3-90	133.32.000 133.32.500	1	3,70
2	6,70					2	6,70
3	9,70					3	9,70
4	12,70					4	12,70
5	15,70					5	15,70
6	18,70					6	18,70
7	21,70					7	21,70
8	24,70					8	24,70
9	27,70					9	27,70
10	30,70					10	30,70
11	33,70					11	33,70
12	36,70					12	36,70
13	39,70					13	39,70
14	42,70					14	42,70
15	47,72	TN 17/T 3-90 TN 17 TND 17	TN 17/T 3-90 TN 17 TND 17	TN 17/T 3-90 TN 17 TND 17	139.36.000 141.31.000 141.31.500	15	47,72
16	52,04	AN 17 AND 17/20/23 ANDC 17/20/23	TR 17A TRD 17A	TR 17A TRD 17A	141.30.400 141.30.800	16	52,04
			TR 17 TRD 17	TR 17 TRD 17	141.30.000 141.30.500	17	56,36
18	60,68					18	60,68
						19	65,00
						20	70,37
20	69,32					TR 23/TR 17 TR 23 TRD 23	141.36.500 142.30.000 142.30.500
						21	74,69
22	79,01					AR 23 ARD 17/20/23 ARDC 17/20/23	79,01

