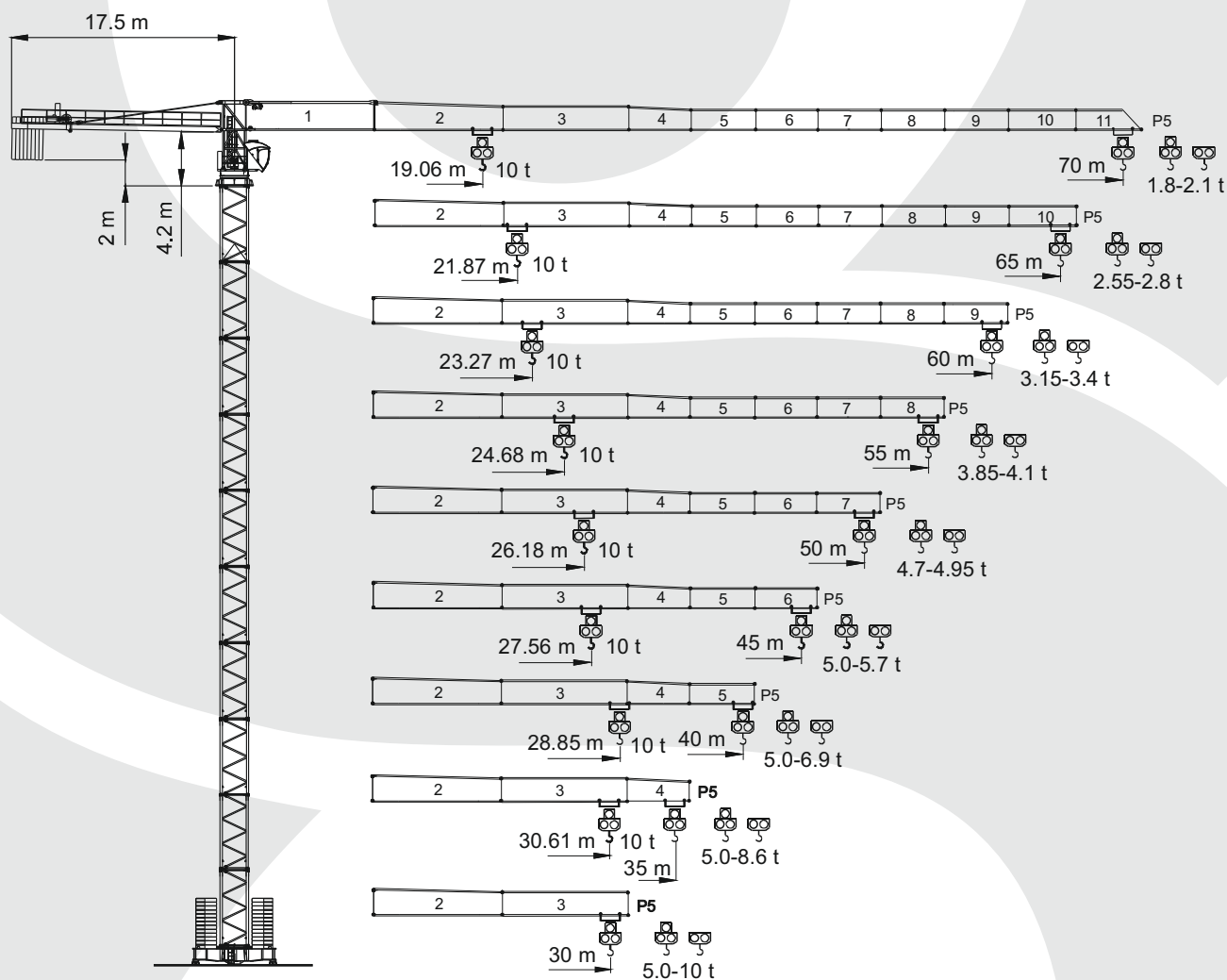


# TEREX CTT 231 -10

MAXIMUM CAPACITY: 10 TONS



## TECHNICAL DATA:

MAXIMUM LOAD: 10 TONS

JIB LENGTH: 70 m

LOAD OD MAXIMUM RADIUS: 1,8 T



[www.herkules-polska.pl](http://www.herkules-polska.pl)

# TEREX CTT 231 -10

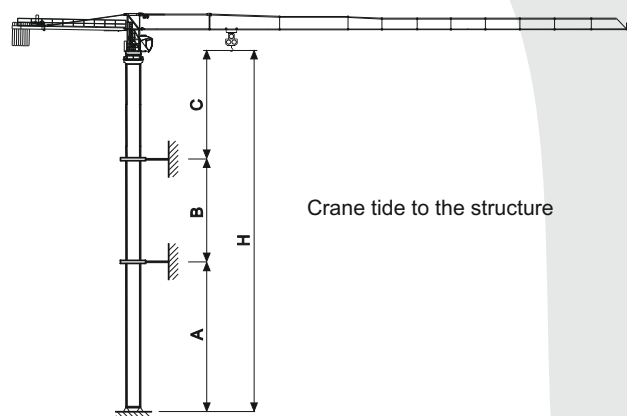
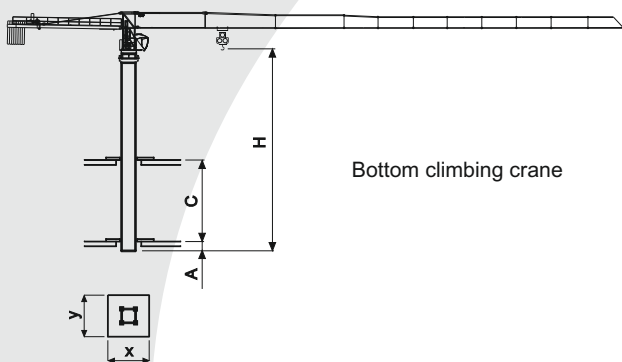
MAXIMUM CAPACITY: 10 TONS



## Load diagram

				m	20	25	30	35	40	45	50	55	60	65	70
5 t	-	35,58 m	t		5,0	5,0	5,0	5,0	4,34	3,76	3,29	2,91	2,59	2,33	2,10
5 t	-	33,88 m	t		5,0	5,0	5,0	4,80	4,04	3,46	2,99	2,61	2,29	2,03	1,80
10 t	-	19,06 m	t		9,45	7,26	5,82	4,80	4,04	3,46	2,99	2,61	2,29	2,03	1,80
5 t	-	40,67 m	t		5,0	5,0	5,0	5,0	5,0	4,43	3,90	3,46	3,10	2,80	
5 t	-	39,13 m	t		5,0	5,0	5,0	5,0	4,87	4,19	3,66	3,22	2,86	2,55	
10 t	-	21,87 m	t		10,0	8,56	6,91	5,74	4,87	4,19	3,66	3,22	2,86	2,55	
5 t	-	43,62 m	t		5,0	5,0	5,0	5,0	5,0	4,82	4,25	3,79	3,40		
5 t	-	41,84 m	t		5,0	5,0	5,0	5,0	5,0	4,57	4,0	3,54	3,15		
10 t	-	23,27 m	t		10,0	9,21	7,45	6,21	5,28	4,57	4,0	3,54	3,15		
5 t	-	46,53 m	t		5,0	5,0	5,0	5,0	5,0	5,0	4,59	4,10			
5 t	-	44,58 m	t		5,0	5,0	5,0	5,0	5,0	4,94	4,34	3,85			
10 t	-	24,68 m	t		10,0	9,85	7,99	6,68	5,70	4,94	4,34	3,85			
5 t	-	49,57 m	t		5,0	5,0	5,0	5,0	5,0	5,0	4,95				
5 t	-	47,51 m	t		5,0	5,0	5,0	5,0	5,0	5,0	4,7				
10 t	-	26,18 m	t		10,0	10,0	8,56	7,17	6,14	5,34	4,7				
5 t	-	45,00 m	t		5,0	5,0	5,0	5,0	5,0	5,0					
5 t	-	45,00 m	t		5,0	5,0	5,0	5,0	5,0	5,0					
10 t	-	27,56 m	t		10,0	10,0	9,09	7,63	6,54	5,7					
5 t	-	40,00 m	t		5,0	5,0	5,0	5,0	5,0						
5 t	-	40,00 m	t		5,0	5,0	5,0	5,0	5,0						
10 t	-	28,85 m	t		10,0	10,0	9,57	8,04	6,9						
5 t	-	35,00 m	t		5,0	5,0	5,0	5,0							
5 t	-	35,00 m	t		5,0	5,0	5,0	5,0							
10 t	-	30,61 m	t		10,0	10,0	10,0	8,6							
5 t	-	30,00 m	t		5,0	5,0	5,0								
5 t	-	30,00 m	t		5,0	5,0	5,0								
10 t	-	30,00 m	t		10,0	10,0	10,0								

## Other configurations



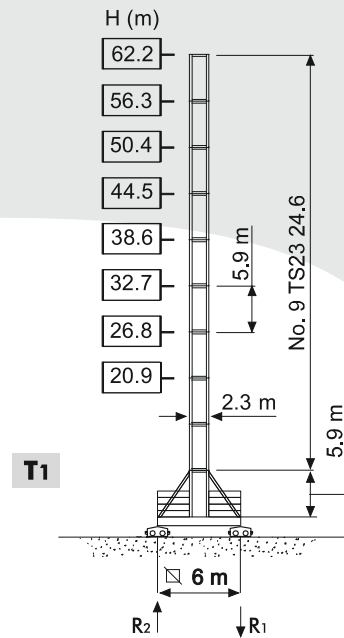
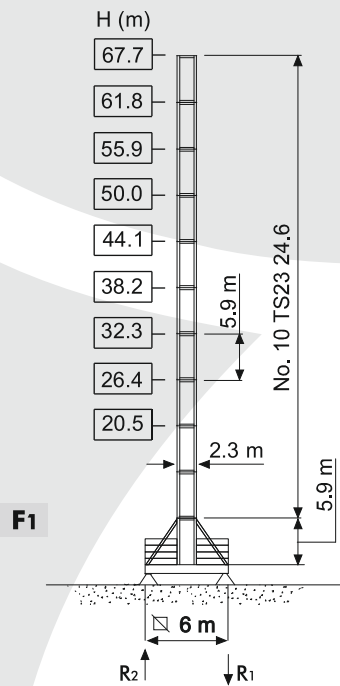
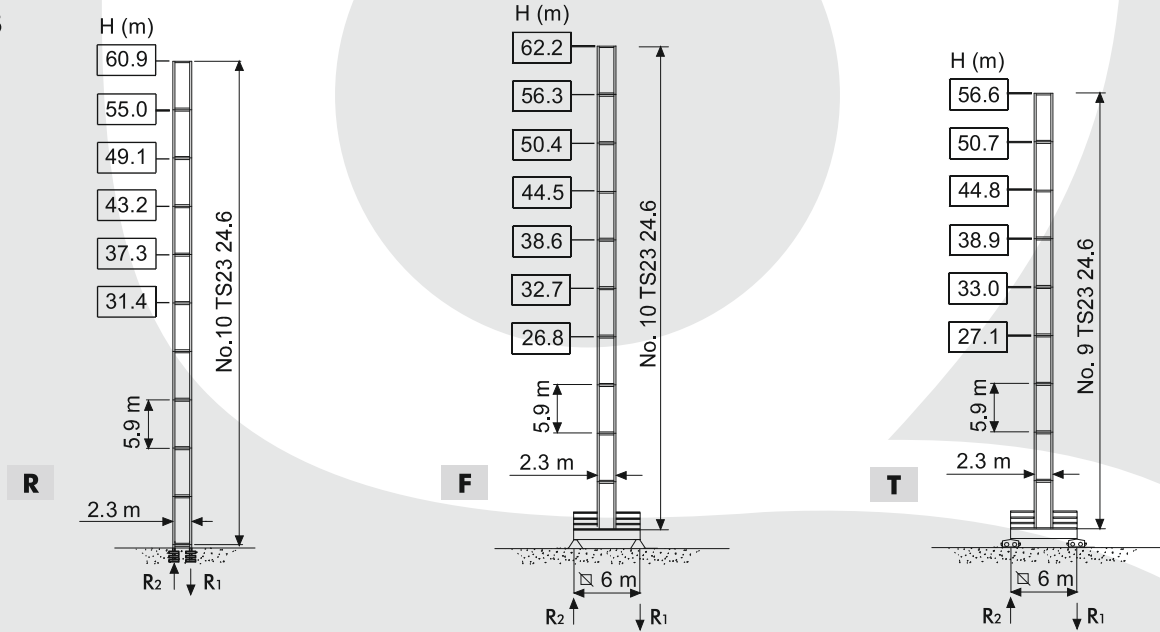
# TEREX CTT 231 -10

MAXIMUM CAPACITY: 10 TONS



## Tower configuration

TS23



- H max.hook height
- in service
- ◄ out of service
- ⬇ weight of crane (without ballast)
- ⬇ max. jib, max. height

# TEREX CTT 231 -10

MAXIMUM CAPACITY: 10 TONS



## Mechanisms

		€	⚡	👂
	37 AFC 50	86 * kVA	400 V - 50 Hz / 460 V - 60 Hz	2000/14/CE

\* Crane withouttravelling equipment

	37 AFC 50 (VECTOR)		m/min	†	kW	rope length (m)
			0 → 2	5		
			2 → 8	5	37	527 m
			8 → 33	5		
			33 → 66	2.2		
			66 → 92	0.9		
			0 → 1	10		
			4 → 4	10		
			16 → 16	10		
			16 → 33	4.4		
			33 → 46	1.8		

	DVF 3 6	0 → 37 → 74 m/min	5.5 kW
	SCC 2 2 112 L	0.88 obr/min	2 x 15 kW
	TSR 2RG 4MB	12 → 24 m/min (50Hz) 14 → 48 m/min (50Hz)	4 x 80 Nm

	Trolleying
	Hosting
	Slewing
	Travelling
	Directive on noise level
€	Power requirements
⚡	Power supply