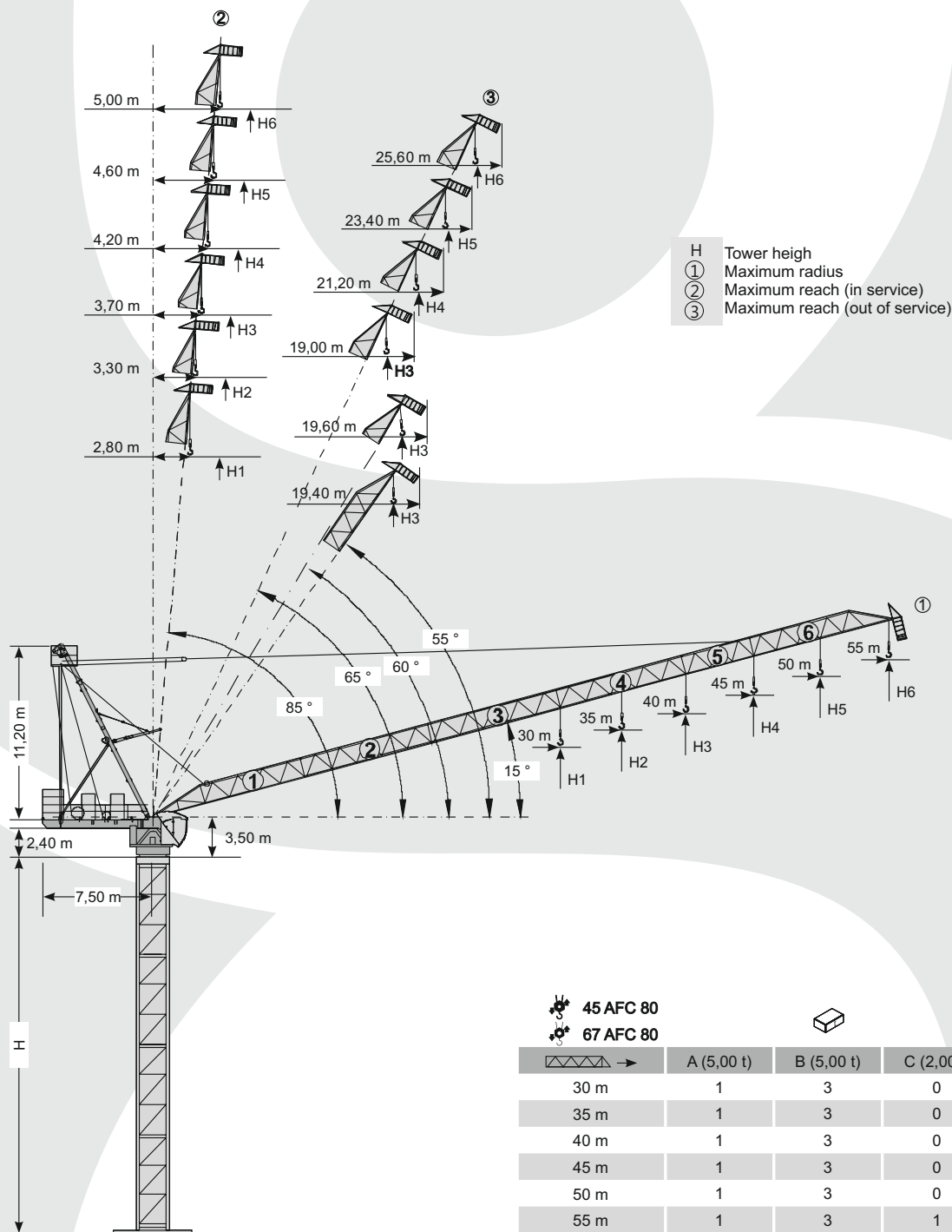


# TEREX CTL 180 TS23

MAXIMUM CAPACITY: 16 TONS



## TECHNICAL DATA:

MAXIMUM LOAD: 16 TONS  
 JIB LENGTH: 55 M

MAXIMUM CAPACITY: 2 TONS

# TEREX CTL 180 TS23

MAXIMUM CAPACITY: 16 TONS



36 m - 54,0 m



360°



180+60 t

## Load diagram

			15 m	20 m	25 m	30 m	35 m	40 m	45 m	50 m	55 m	
	8 t →	25,50 m	t	8,00	8,00	8,00	6,33	4,97	3,95	3,15	2,52	2,00
	8 t →	28,60 m	t	8,00	8,00	8,00	7,46	5,90	4,73	3,82	3,10	
	12 t →	20,50 m	t	12,00	12,00	9,19	7,06	5,54	4,40	3,51	2,80	
	8 t →	29,70 m	t	8,00	8,00	8,00	7,90	6,31	5,12	4,20		
	12 t →	21,20 m	t	12,00	12,00	9,70	7,53	5,97	4,80	3,90		
	8 t →	29,30 m	t	8,00	8,00	8,00	7,75	6,18	5,00	*		
	12 t →	22,00 m	t	12,00	12,00	10,19	7,97	6,38	5,20			
	16 t →	17,10 m	t	16,00	13,26	9,96	7,75	6,18	5,00			
	8 t →	29,80 m	t	8,00	8,00	8,00	7,95	6,40	*			
	12 t →	22,20 m	t	12,00	12,00	10,34	8,16	6,60				
	16 t →	17,20 m	t	16,00	13,37	10,12	7,95	6,40				
	8 t →	30,00 m	t	8,00	8,00	8,00	8,00					
	12 t →	22,90 m	t	12,00	12,00	10,81	8,60					
	16 t →	17,70 m	t	16,00	13,91	10,60	8,40					

\* = + 500 kg [ 35m - 40 m ]

## Jib configuration, tower configuration



H

		①	②	③
30 m	1 + 2 + 6	H1	H + 8,10 m	H + 23,30 m
35 m	1 + 2 + 5 + 6	H2	H + 9,40 m	H + 29,20 m
40 m	1 + 2 + 3 + 6	H3	H + 10,70 m	H + 35,40 m
45 m	1 + 2 + 3 + 5 + 6	H4	H + 12,10 m	H + 40,10 m
50 m	1 + 2 + 3 + 4 + 6	H5	H + 13,40 m	H + 44,80 m
55 m	1 + 2 + 3 + 4 + 5 + 6	H6	H + 14,70 m	H + 49,50 m

# TEREX CTL 180 TS23

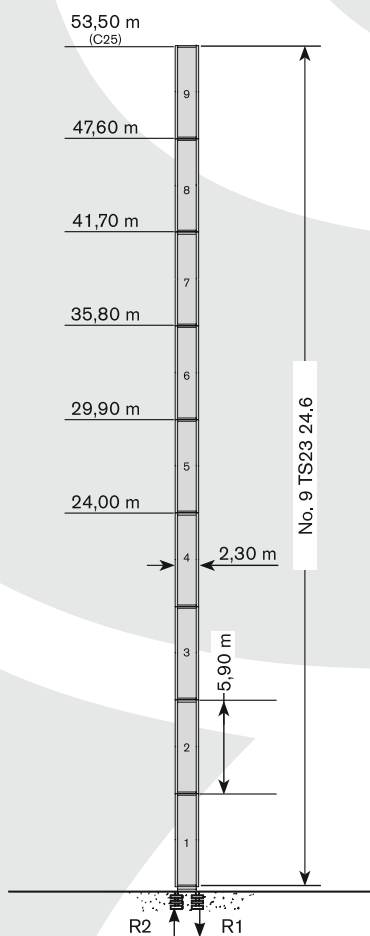
MAXIMUM CAPACITY: 16 TONS



## Tower configurations

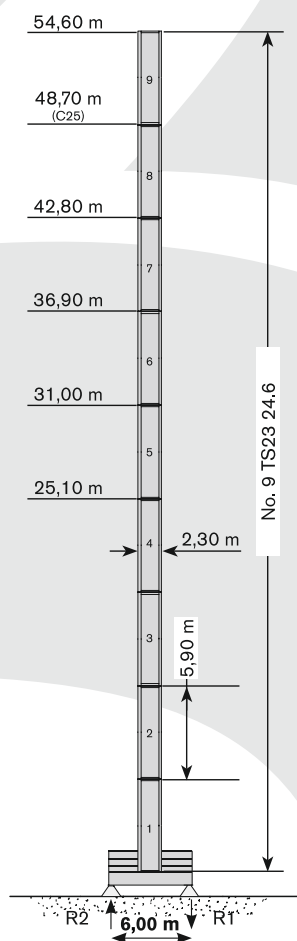
### TS23

	●	◆
R1	-1800 kN	-2766 kN
R2	1300 kN	2376 kN
	600 kN	



→	max. H (m)	
	FEM 1004 C25	FEM 1001
30 m	53,50	53,50
35 m	47,60	47,60
40 m	47,60	47,60
45 m	47,60	41,70
50 m	41,70	41,70
55 m	41,70	41,70

	●	◆
R1	-1250 kN	-1800 kN
R2	0 kN	0 kN
	720 kN	



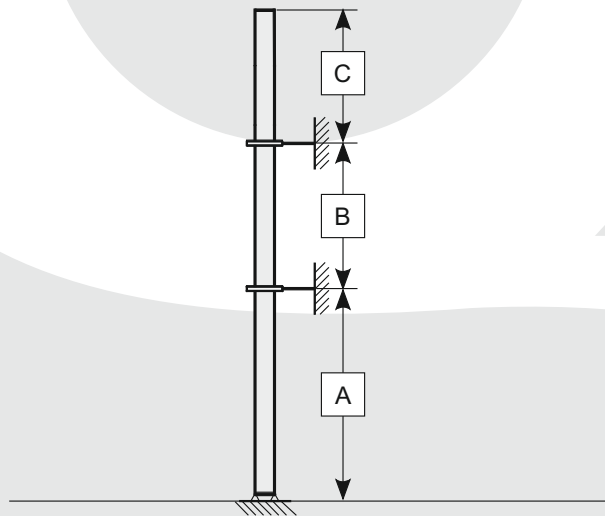
→	max. H (m)	
	FEM 1004 C25	FEM 1001
30 m	48,70	54,60
35 m	48,70	48,70
40 m	42,80	48,70
45 m	42,80	42,80
50 m	36,90	42,80
55 m	36,90	42,80

# TEREX CTL 180 TS23


MAXIMUM CAPACITY: 16 TONS



## Other configurations



Tower: TS23

 →	A min/max	B min/max	C max
30 m	34 m / 40 m	23,6m/29,5m	37 m
35 m	28 m / 34 m	<b>23,6m/29,5m</b>	31 m
40 m	28 m / 34 m	23,6m/29,5m	31 m
45 m	22 m / 28 m	23,6m/29,5m	25 m
50 m	22 m / 28 m	<b>23,6m/29,5m</b>	25 m
55 m	22 m / 28 m	23,6m/29,5m	25 m

# TEREX CTL 180 TS23

MAXIMUM CAPACITY: 16 TONS



## Mechanisms

	45 AFC 80	125 VA*	400 V - 50 Hz / 460 V - 60 Hz		2000/14/CE
	67 AFC 80	150 VA*			

\* Żuraw bez układu jezdznego

			t	m/min	kW	Rope length (m)				
	45 AFC 80 45 AFC 80 (vector)		8	0 ▶ 30	45	560 m 850 m				
			6	0 ▶ 39						
			4	0 ▶ 56						
			2	0 ▶ 97						
			1,7	0 ▶ 110						
		12	0 ▶ 20							
			9	0 ▶ 26						
			6	0 ▶ 37						
			3	0 ▶ 64,5						
			2,55	0 ▶ 73,5						
			16	0 ▶ 15						
			12	0 ▶ 19,5						
			8	0 ▶ 28						
			4	0 ▶ 48,5						
			3,4	0 ▶ 55						
			8	0 ▶ 41			67	560 m 850 m		
			67 AFC 80 67 AFC 80 (vector)						6	0 ▶ 53
									4	0 ▶ 76
2	0 ▶ 135									
1,85	0 ▶ 145									
12	0 ▶ 27,5									
	9			0 ▶ 35,5						
	6			0 ▶ 50,5						
	3			0 ▶ 90						
	2,78			0 ▶ 96,5						
	16			0 ▶ 20,5						
	12			0 ▶ 26,5						
	8			0 ▶ 38						
	4			0 ▶ 67,5						
	3,7			0 ▶ 72,5						



Luffing



Slewing



Hosting



Directive on noise level



Power requirements



Power supply

	LFC 45 R00 / R001 (vector)	2 min	45 kW
	SCC 2 2 100	0 ▶ 0,75 obr/min	2 x 7 kW