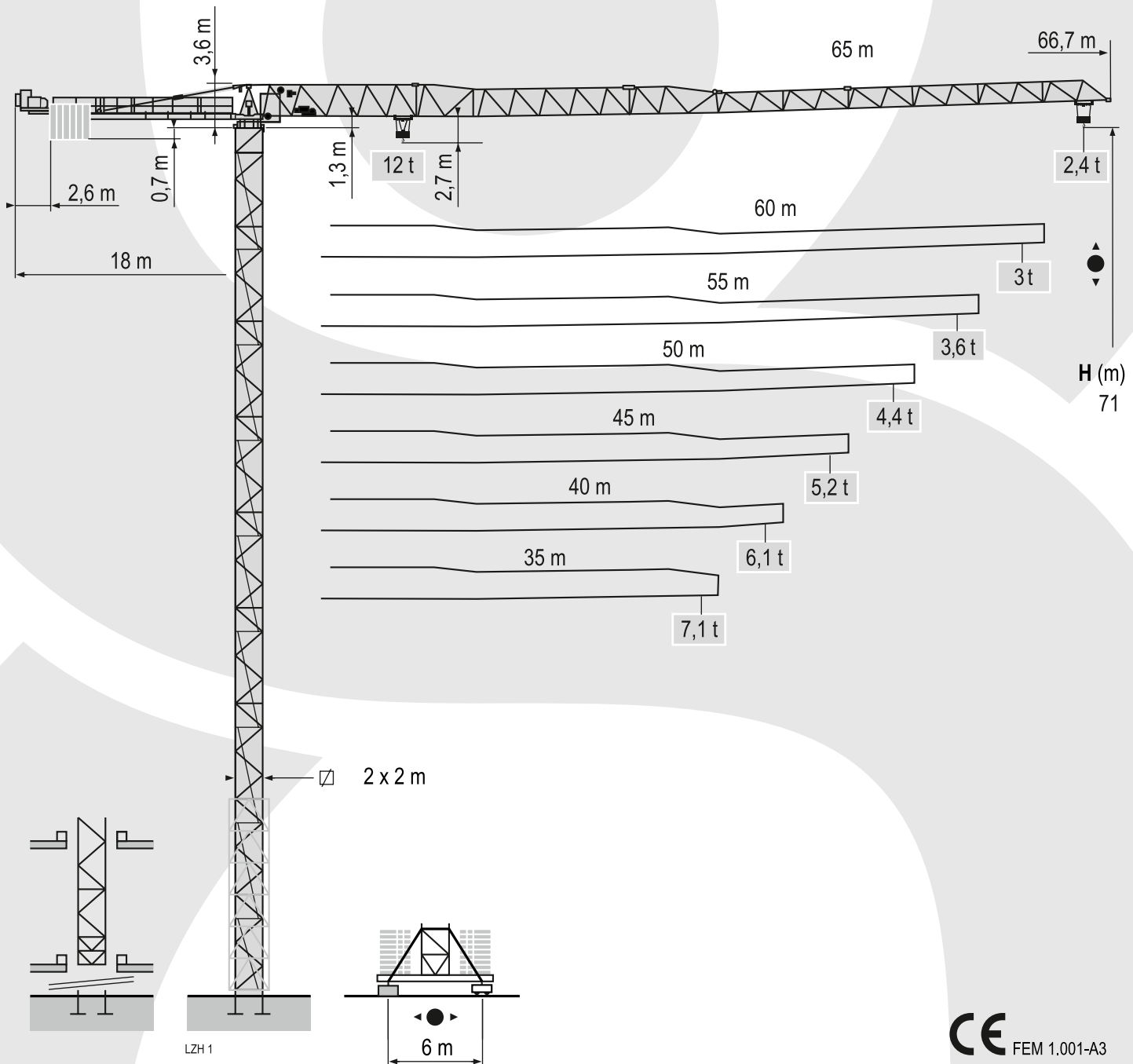


# POTAIN MDT 222 J12

UDŹWIG MAKSYMALNY 12 TON

 **HERKULES**



 FEM 1.001-A3

## DANE TECHNICZNE:

UDŹWIG MAKSYMALNY: 12 TON

DŁUGOŚĆ WYSIĘGNIKA: 65 M

UDŹWIG NA MAKSYMALNYM WYSIĘGNIKU: 2,4 TONY

 **HERKULES**

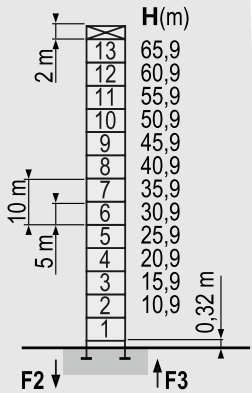
[www.herkules-polska.pl](http://www.herkules-polska.pl)

# POTAIN MDT 222 J12

UDŹWIG MAKSYMALNY 12 TON

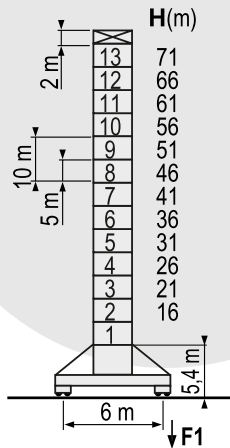


## Konfiguracja Wieży



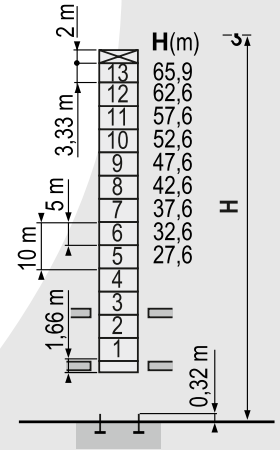
### P 61 A

- F2 ● 145 t
- 223 t
- F3 ● 91 t
- 174 t
- ▲ 78 t

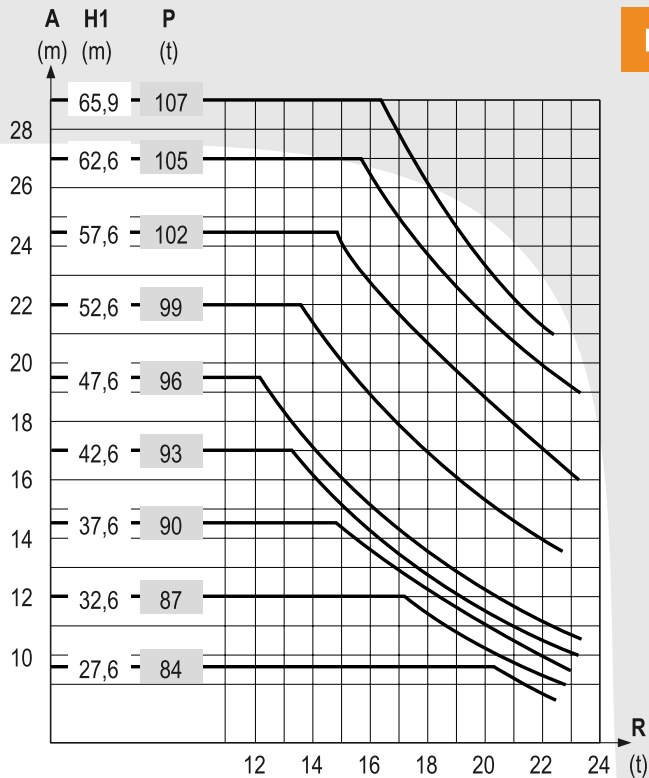
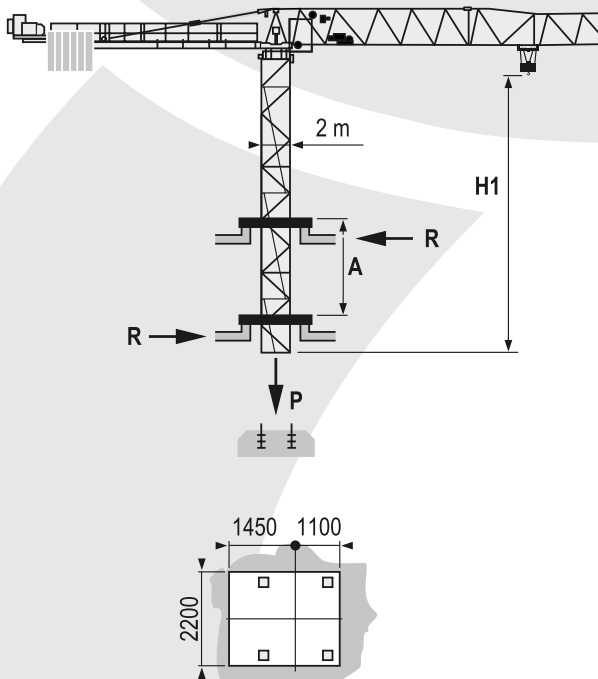


### V 60 A

- F1 ● 108 t
- 145 t
- ▲ 90 t



### B 60 A



### B 60 A

# POTAIN MDT 222 J12

UDŹWIG MAKSYMALNY 12 TON



Tabela udźwągów

65 m 	2,4 ▶	16,9	17	20	22	25	27	30	32	35	37	40	42	45	47	50	52	55	57	60	62	65 m
		12	11,9	9,9	8,9	7,7	7	6,2	5,8	5,2	4,9	4,4	4,2	3,8	3,6	3,4	3,2	3	2,9	2,7	2,6	2,4 t
60 m 	2,4 ▶	18,5	20	22	25	27	30	32	35	37	40	42	45	47	50	52	55	57	60 m			
		12	11	9,8	8,5	7,8	6,9	6,4	5,8	5,4	4,9	4,7	4,3	4,1	3,8	3,5	3,4	3,2	3	3 t		
55 m 	2,4 ▶	19,5	20	22	25	27	30	32	35	37	40	42	45	47	50	52	55 m					
		12	11,7	10,5	9,1	8,3	7,4	6,8	6,2	5,8	5,3	5	4,6	4,4	4,1	3,9	3,6 t					
50 m 	2,4 ▶	20,9	22	25	27	30	32	35	37	40	42	45	47	50 m								
		12	11,3	9,8	9	8	7,4	6,7	6,3	5,7	5,4	5	4,7	4,4 t								
45 m 	2,4 ▶	21,6	22	25	27	30	32	35	37	40	42	45 m										
		12	11,8	10,2	9,3	8,3	7,7	7	6,5	6	5,6	5,2 t										
40 m 	2,4 ▶	22	25	27	30	32	35	37	40 m													
		12	10,4	9,5	8,5	7,9	7,1	6,7	6,1 t													
35 m 	2,4 ▶	22	25	27	30	32	35 m															
		12	10,4	9,5	8,5	7,9	7,1 t															

		3 150 kg - 2 100 kg	
		50 LVF 30	75 LVF 30
		(kg)	(kg)
65 m	18 m	19 950	18 900
60 m	18 m	18 900	17 850
55 m	18 m	18 900	17 850
50 m	18 m	17 850	16 800
45 m	18 m	16 800	15 750
40 m	18 m	14 700	13 650
35 m	18 m	12 600	11 550











2 m	V 60 A	H (m)	71	66	61	56	51	46	41	36	31	26	21	16
		(t)	120	96	72	48	48	48	48	48	48	48	48	48

# POTAIN MDT 222 J12

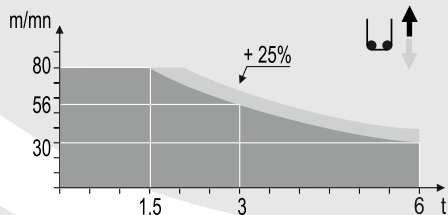
UDŹWIG MAKSYMALNY 12 TON

 **HERKULES**

## Mechanizmy

																ch - PS hp	kW			
	50 LVF 30 Optima	m/min	2,4 → 10 → 30 → 38 → 56 → 80							1,2 → 5 → 15 → 19 → 28 → 40							50	37	454 m	
		t	6	6	6	4,5	3	1,5	12	12	12	9	6	3						
	75 LVF 30 Optima	m/min	3,8 → 15 → 44 → 58 → 82 → 118							1,9 → 7,5 → 22 → 29 → 41 → 59							75	55	612 m	
		t	6	6	6	4,5	3	1,5	12	12	12	9	6	3						
	6 DVF 4	m/min	0 → 50 (12 t) - 0 → 100 (6 t) - 0 → 120 (3 t)														5,5	4		
	RVF 162 Optima +	tr/min U/min rpm	0 → 0,7														2 x 7,5	2 x 5,5		
	V 60 A RT 544 A1 2V R ≥ 13 m	m/min	13,5 - 27														4 x 7	4 x 5,2		
CEI 38 		IEC 38																		
400V (+6%-10%) 50 Hz		50 LVF : 75 kVA 75 LVF : 100 kVA																		

50 LVF 30  
Optima



75 LVF 30  
Optima

