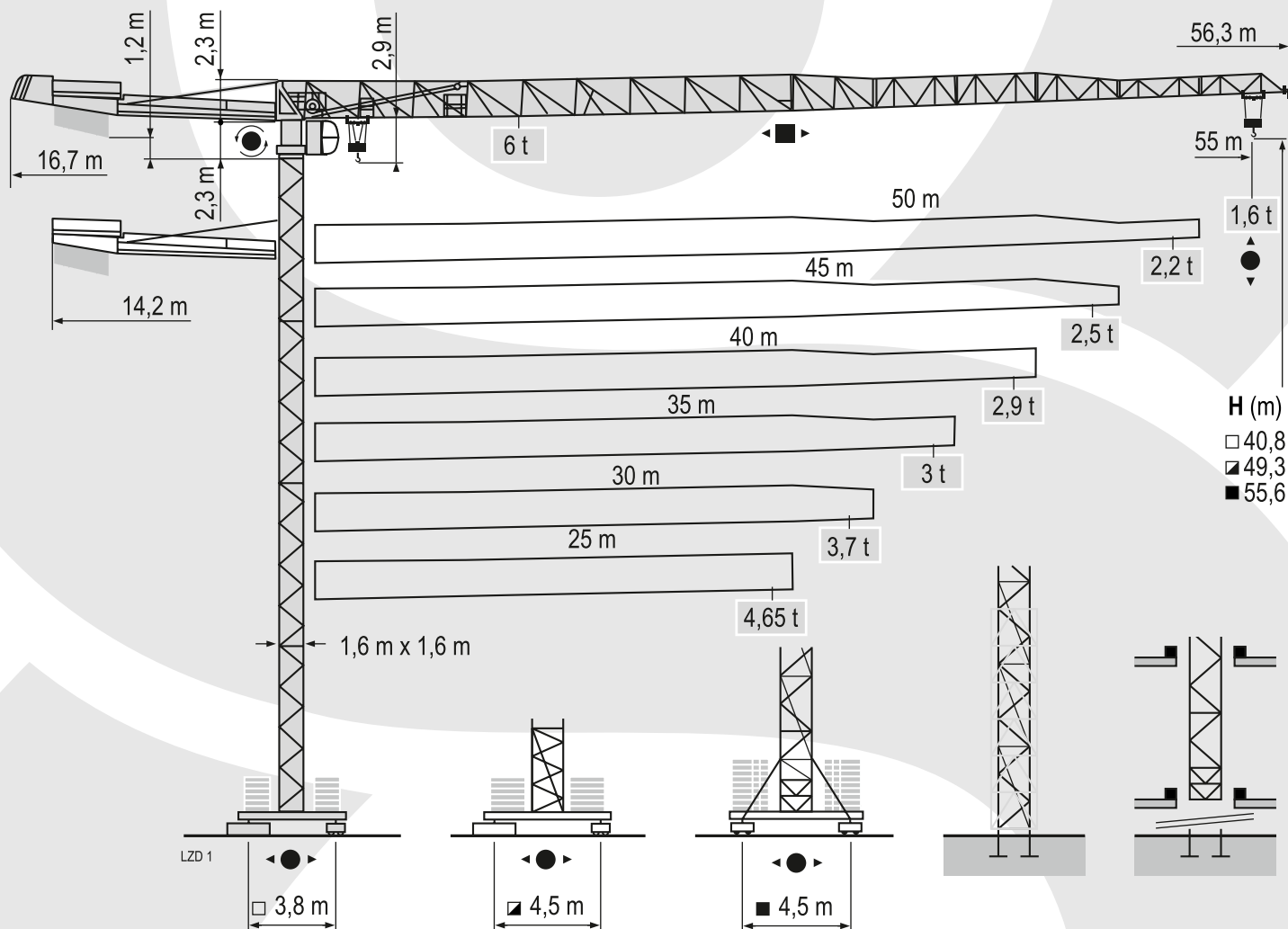


POTAIN MDT 128

UDŹWIG MAKSYMALNY 6 TON

 **HERKULES**



 FEM 1.001-A3

DANE TECHNICZNE:

UDŹWIG MAKSYMALNY: 6 TON

DŁUGOŚĆ WYSIĘGIKA: 55 M

UDŹWIG NA MAKSYMALNYM WYSIĘGIKU: 1,6 TONY

 **HERKULES**

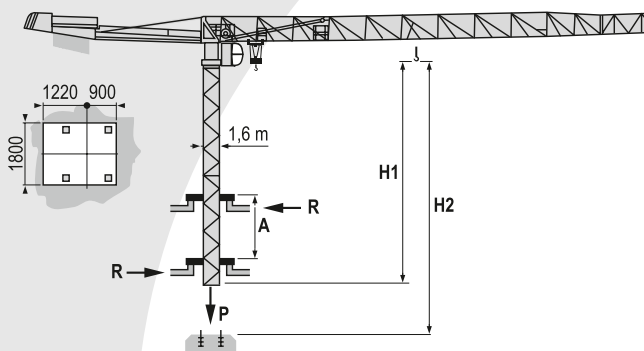
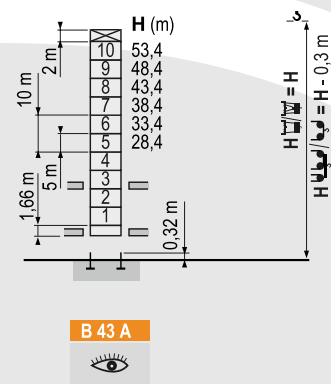
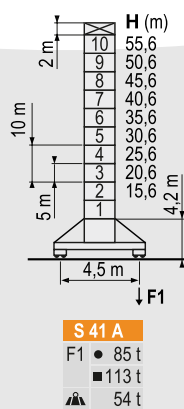
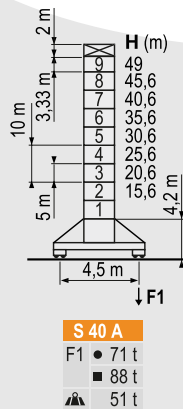
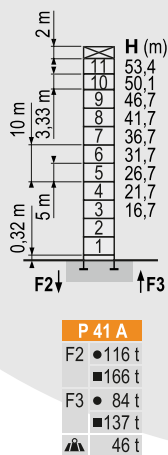
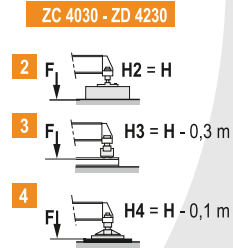
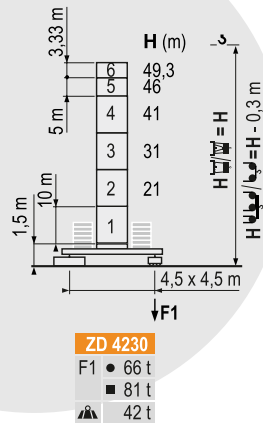
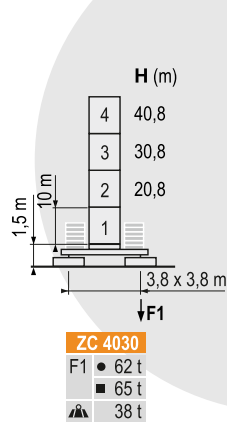
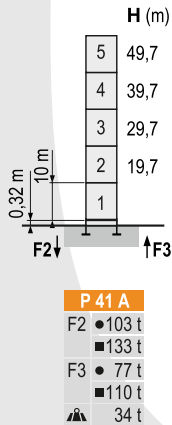
www.herkules-polska.pl

POTAIN MDT 128

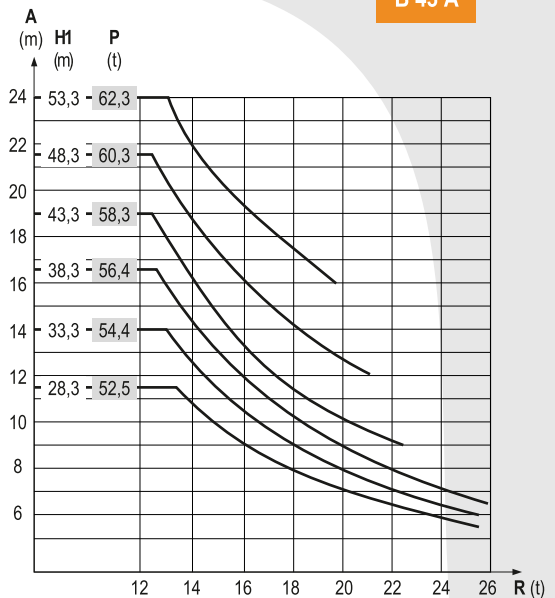
UDŹWIG MAKSYMALNY 6 TON



Konfiguracja Wieży



B 43 A



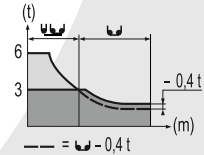
POTAIN MDT 128

UDŹWIG MAKSYMALNY 6 TON

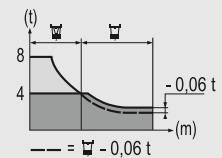


Tabela udźwignów

55 m	3,1 ▶	17,3	20	22	25	27	30,1	33,2	35	37	40	42	45	47	50	52	55 m
▶		6	5	4,5	3,8	3,5	3	3	2,8	2,65	2,4	2,25	2,05	1,95	1,8	1,7	1,6 t
50 m	3,1 ▶	20	22	25	27	30	32	35,1	38,7	40	42	45	47	50 m			
▶		6	5,4	4,6	4,2	3,7	3,4	3	3	2,9	2,7	2,5	2,35	2,2 t			
45 m	3,1 ▶	20	22	25	27	30	32	35	38,7	40	42	45 m					
▶		6	5,4	4,6	4,2	3,7	3,4	3	3	2,9	2,7	2,5 t					
40 m	3,1 ▶	20,1	22	25	27	30	32	35,2	38,9	40 m							
▶		6	5,4	4,6	4,2	3,7	3,4	3	3	2,9 t							
35 m	3,1 ▶	20,1	22	25	27	30	32	35 m									
▶		6	5,4	4,6	4,2	3,7	3,4	3 t									
30 m	3,1 ▶	20,2	22	25	27	30 m											
▶		6	5,4	4,6	4,2	3,7 t											
25 m	3,1 ▶	20,2	22	25 m													
▶		6	5,4	4,65 t													



55 m	2,4 ▶	17,5	20	22	25	27	30	31,2	31,7	35	37	40	42	45	47	50	52	55 m
▶		6	5,1	4,6	3,9	3,6	3,2	3	3	2,65	2,45	2,25	2,1	1,9	1,8	1,65	1,55	1,45 t
50 m	2,4 ▶	20,4	22	25	27	30	32	35	36,4	37	40	42	45	47	50 m			
▶		6	5,5	4,7	4,3	3,8	3,5	3,2	3	3	2,75	2,55	2,35	2,2	2,05 t			
45 m	2,4 ▶	20,4	22	25	27	30	32	35	36,4	37	40	42	45 m					
▶		6	5,5	4,7	4,3	3,8	3,5	3,2	3	3	2,75	2,55	2,35 t					
40 m	2,4 ▶	20,6	22	25	27	30	32	35	36,7	37,3	40 m							
▶		6	5,5	4,8	4,4	3,8	3,6	3,2	3	3	2,75 t							
35 m	2,4 ▶	20,6	22	25	27	30	32	35 m										
▶		6	5,6	4,8	4,4	3,9	3,6	3,2 t										
30 m	2,4 ▶	20,6	22	25	27	30 m												
▶		6	5,6	4,8	4,4	3,8 t												
25 m	2,4 ▶	20,6	22	25 m														
▶		6	5,6	4,8 t														



	1 100 kg - 3 600 kg	
▶	▶	▶ (kg)
55 m	16,7 m	12 700
50 m	14,2 m	12 700
45 m	14,2 m	11 600
40 m	14,2 m	10 500
35 m	14,2 m	9 400
30 m	14,2 m	9 400
25 m	14,2 m	8 300

▶ 1,6 m	ZC 4030 ▶	H (m)	40,8	30,8	20,8	10,8
		▶ (t)	70	65	60	55

▶ 1,6 m	ZD 4230 ▶	H (m)	49,3	46	41	31	21	11
		▶ (t)	80	75	60	45	45	45

▶ 1,6 m	S 40 A ▶	H (m)	49	45,6	40,6	35,6	30,6	25,6	20,6	15,6
		▶ (t)	84	72	54	42	42	42	36	36












▶ 1,6 m	S 41 A ▶	H (m)	55,6	50,6	45,6	40,6	35,6	30,6	25,6	20,6	15,6
		▶ (t)	114	96	72	54	42	42	42	36	36

POTAIN MDT 128

UDŹWIG MAKSYMALNY 6 TON

 **HERKULES**

Mechanizmy

														ch - PS hp	kW												
	25 LVF 15 Optima	m/min	3,2	→	8,6	→	30	→	40	→	52	→	70	1,6	→	4,3	→	15	→	20	→	26	→	35	25	18	260 m
	t	3	3	3	2,25	1,5	0,75	6	6	6	4,5	3	1,5	6	6	6	4,5	3	1,5								
	33 LVF 15 Optima	m/min	3	→	12	→	36	→	48	→	68	→	92	1,5	→	6	→	18	→	24	→	34	→	46	30	22	260 m
	t	3	3	3	2,25	1,5	0,75	6	6	6	4,5	3	1,5	6	6	6	4,5	3	1,5								
	7 DVF 4	m/min	0 → 79											6,5	4,8												
	RVF 152 Optima +	tr/min U/min rpm	0 → 0,8											2 x 5,5	2 x 4												
ZC 4030 	RT 224	m/min	25											2 x 4	2 x 2,9												
ZD 4230 	RT 324	m/min	12,5 - 25											2 x 7	2 x 5,2												
S 40 A 	RT 324 R ≥ 10 m	m/min	12,5 - 25											2 x 7	2 x 5,2												
S 41 A 	RT 443 A1 2V R ≥ 10 m	m/min	15 - 30											4 x 5	4 x 3,7												

CEI 38



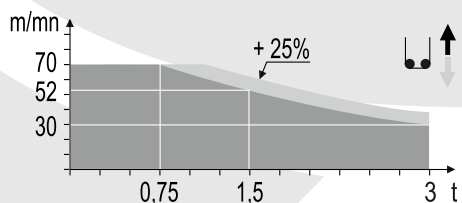
IEC 38

kVA

400 V (+6% -10%) 50 Hz

25 LVF : 40 kVA
33 LVF : 50 kVA

25 LVF 15 Optima



33 LVF 15 Optima

